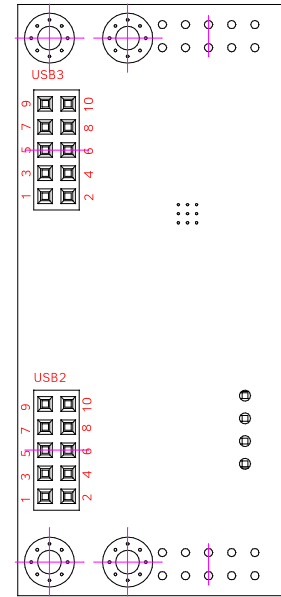
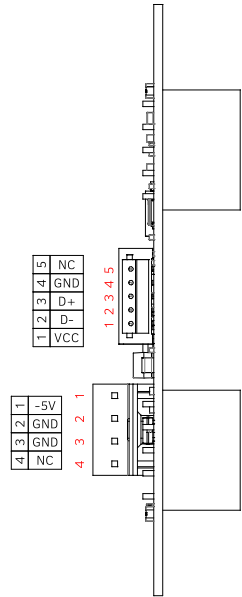
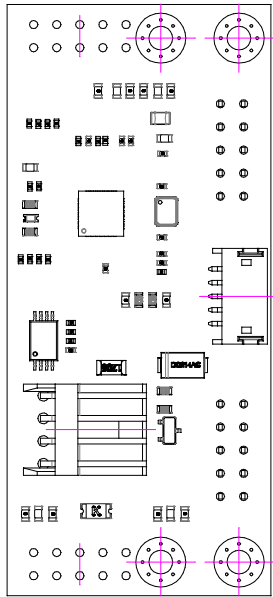


APPROVED:	- TOLERANCES -		UNIT:	TITLE:	SHEET
ERIC	GENERAL	ANGLES	MM	3D PCB VIEW	1/3
ENGINEER:	30~ ±0.25	0° ±15°	SCALE:	MODEL:	DATE:
CASH	10~30 ±0.20	0.0° ±10°	1:1	UH24A-2F	February 21, 2023
DRAWN:	5~10 ±0.15				REV.
KEN	0~5 ±0.10				1.0



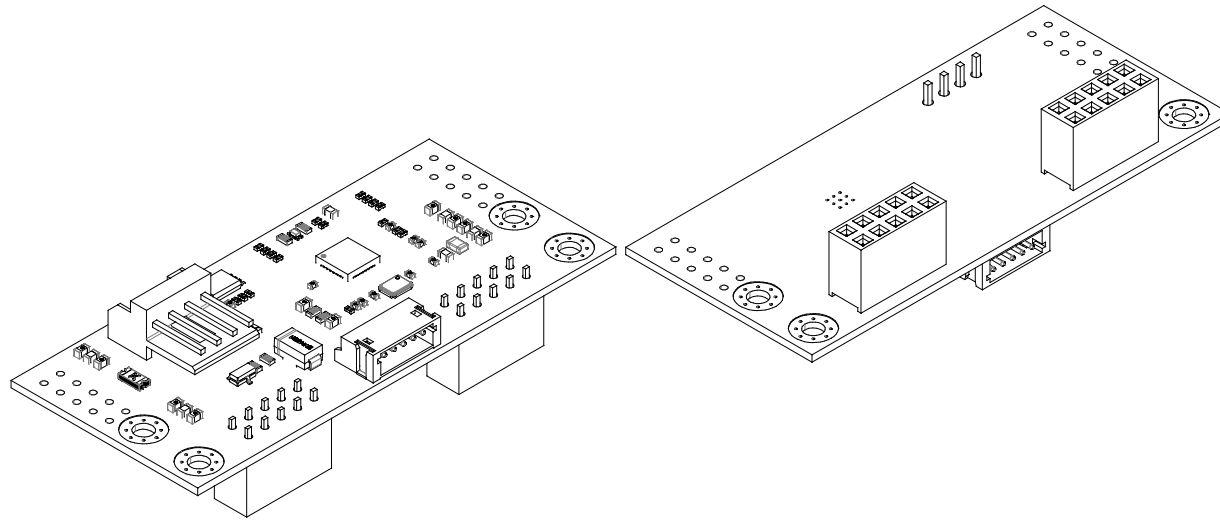
USB(1/2/3/4)
PIN DEFINE

2	4	6	8	10
NC	NC	NC	NC	NC
1	3	5	7	9
Vbus	D-	D+	GND	NC

APPROVED:	- TOLERANCES -		UNIT:	TITLE:		SHEET
ERIC	GENERAL	ANGLES	MM	3D PCB VIEW		2/3
ENGINEER:	30~ ±0.25	0° ±15°	SCALE:	MODEL:	DATE:	SIZE
CASH	10~30 ±0.20	0.0° ±10°	1:1	UH24A-2F	February 21, 2023	A4
DRAWN:	5~10 ±0.15					REV.
KEN	0~5 ±0.10					1.0

1 2 3 4 5 6 7 8 9 10 11 12

PROPRIETARY AND CONFIDENTIAL



APPROVED:	- TOLERANCES -		UNIT:	TITLE:	SHEET
ERIC	GENERAL	ANGLES	MM	3D PCB VIEW	3/3
ENGINEER:	30~ ±0.25	0° ±15°	SCALE:	MODEL:	DATE:
CASH	10~30 ±0.20	0.0° ±10°	1:1	UH24A-2F	February 21, 2023
CHECKED:	5~10 ±0.15				REV.
DRAWN:	0~5 ±0.10				1.0
KEN					