

UC27A

(USB 2.0 Interface Smart Card Reader)

The **UC27A** is a highly integrated single chip USB Smart Card reader controller.

Highly integration enables the lowest BOM cost of smart card reader.

The **UC27A** supports multiple international standards including ISO7816 for IC card standard, PC/SC 2.0 for windows smart card standard,

Microsoft WHQL, EMV for Europay MasterCard Visa standard and USB IF CCID standard. The application of AK9563 can be generally applied to Smart Card read/write terminal devices, such as ATM, POS terminal, Public telephone, E Commerce, personal consumption on Internet, personal certification, prepaid system, loyalty system...etc.

Features

- Support Single Slot
- Support T0, T1 Protocol
- Support I2C memory card, SLE4418, SLE4428, SLE4432, SLE4442, SLE4436, SLE5518, SLE5528, SLE5532, SLE5536, SLE5542, SLE6636, and AT88SC102, AT88SC153, AT88SC1608, AT45D021, AT45D041 cards via external EEPROM
- Support ISO7816 Class A, B and C (5V/3V/1.8V) Cards
- Implemented as an USB full speed device with bulk transfer endpoint
- Built in PLL for USB and Smart Card clocks requirement
- Support EEPROM for USB descriptors customization (PID/VID/iManufacturer/iProduct/Serial Number) and accessing memory card module
- EEPROM programmable via USB interface
- Support software update for memory card module
- Support short APDU and extended APDU
- Compatible with Microsoft USB CCID inbox driver
- Support remote wake up through inserting card/removing card
- Support USB selective suspend
- Support Power Saving Mode (Using one pin to select between Normal/PWR Saving Mode)
- Support card power over current protection mechanism
- Embedded clock source

System Requirements

- Windows XP/2000/Vista/Win7/Win8/Win10
- Linux Redhead 9, Ubuntu 8.04, Fedora Core 9 or later version

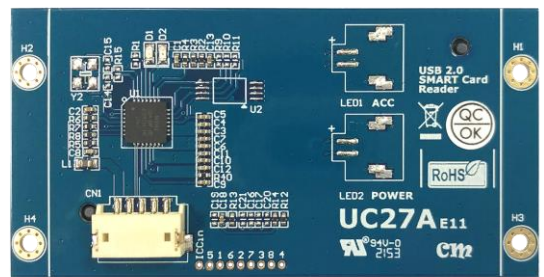
Certification

RoHS

Operating Temperature

0 ~ 70°C

UC27A PCBA



Standard Compliance

- EMV4.3 Level 1 Specification Certified
- PBOC3.0 Level 1 Certified
- Supports USB 2.0 Full Speed, USB IF Certified
- Based on ISO7816 implementation
- Support PC Smart Card Industry Standard PC/SC 2.0
- Support Microsoft Smart Card for Windows
- Meet Microsoft WHQL Smart Card Reader requirements
- Meet US Federal Information Processing Standards (FIPS) Publication 201 requirements on smart card reader interoperability
- Compatible operating system
 - Windows XP/2000/Vista/Win7/Win8/Win10
 - Linux Redhead 9, Ubuntu 8.04, Fedora Core 9 or later version
- Support card power over current protection mechanism
- Embedded clock source