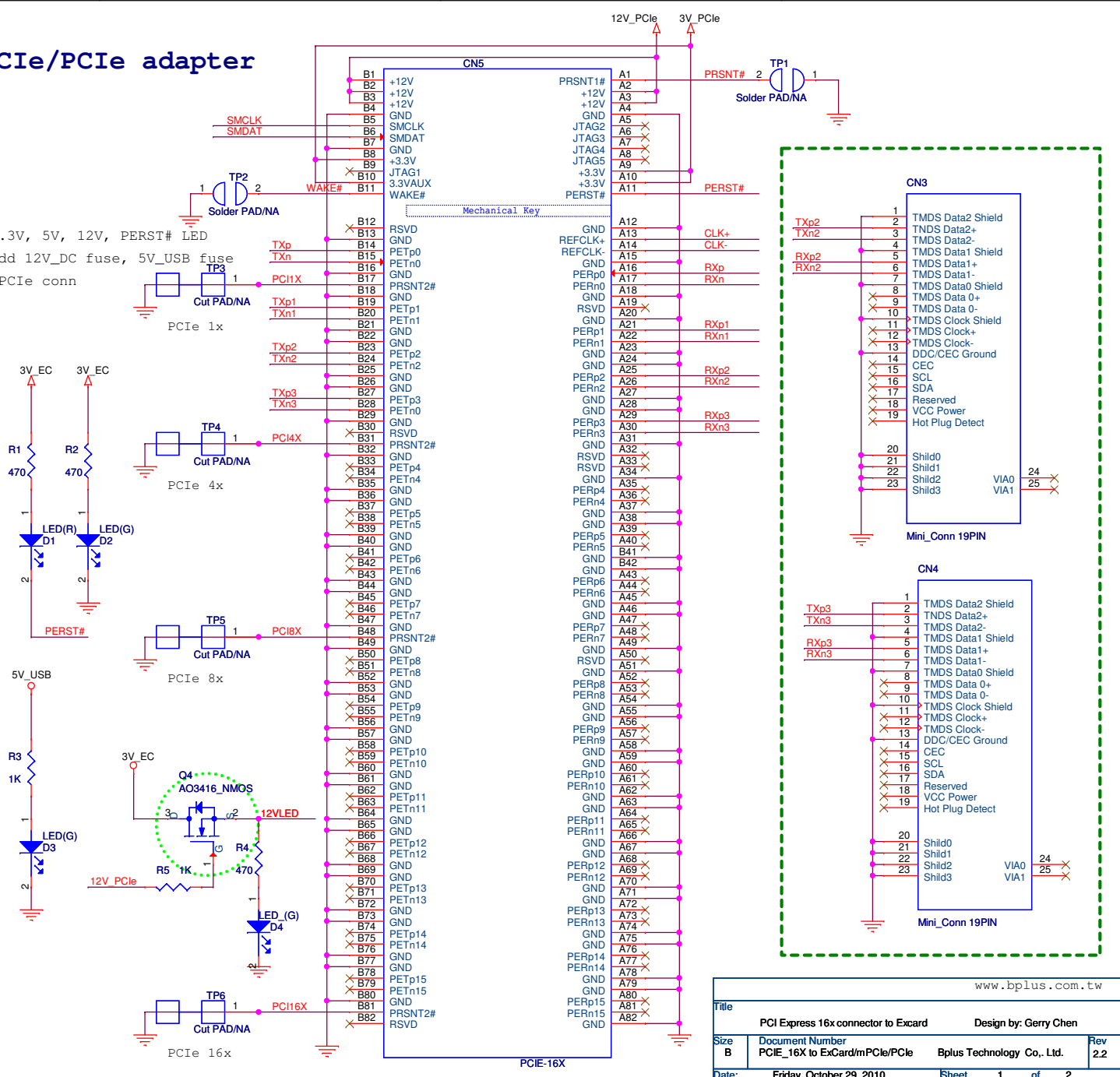
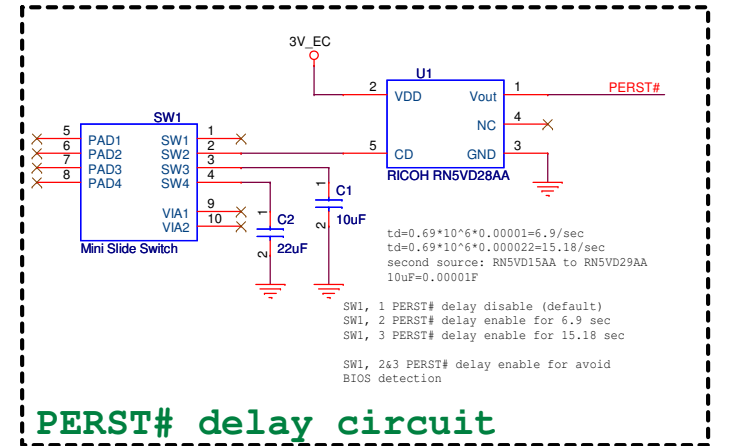
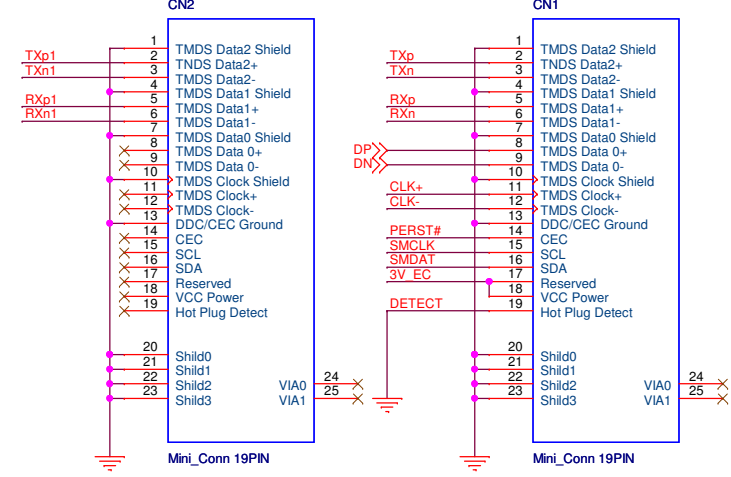


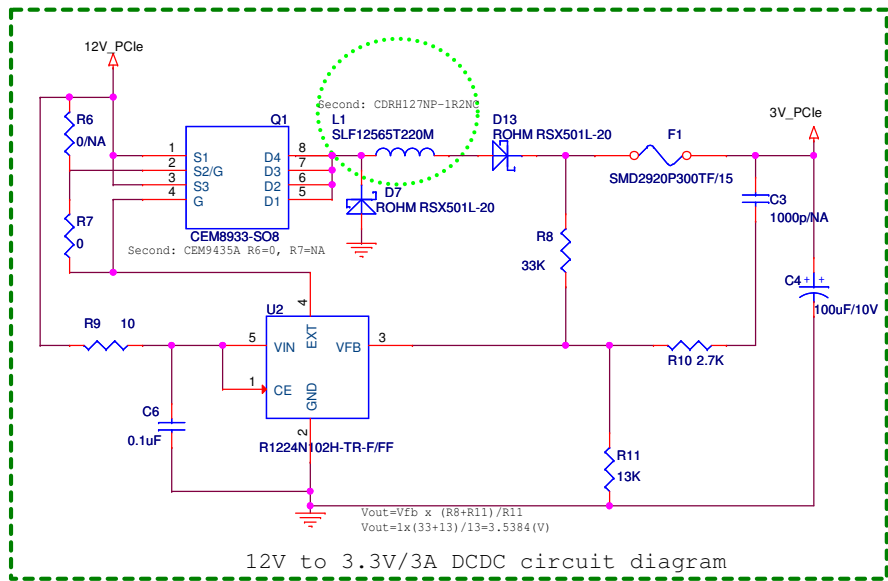
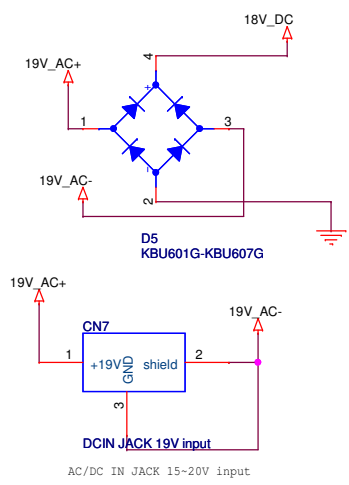
Model Name: PE4H
Product Name: PCIe 16x to ExCard/mPCIe/PCIe adapter
Ver 2.4

Revision History

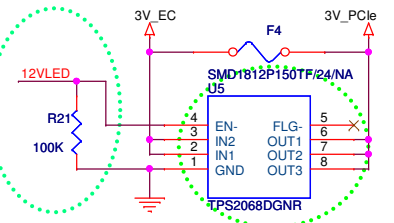
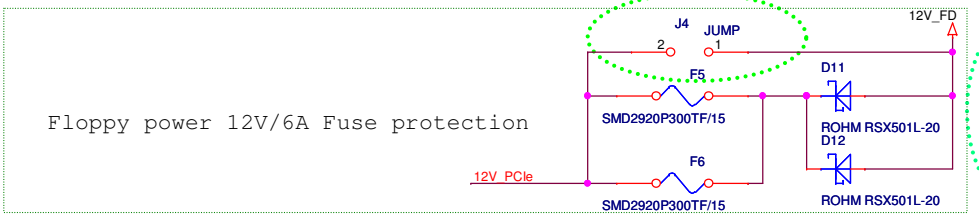
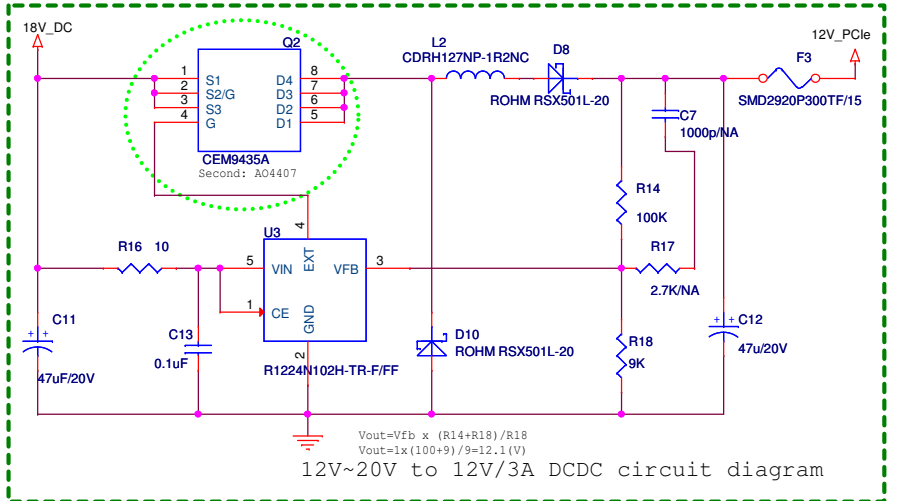
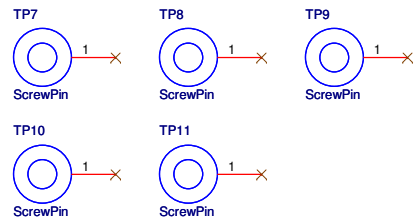
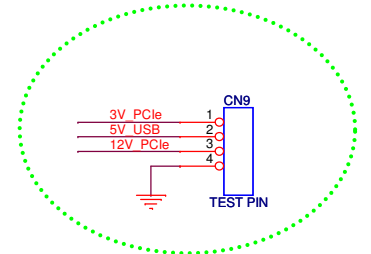
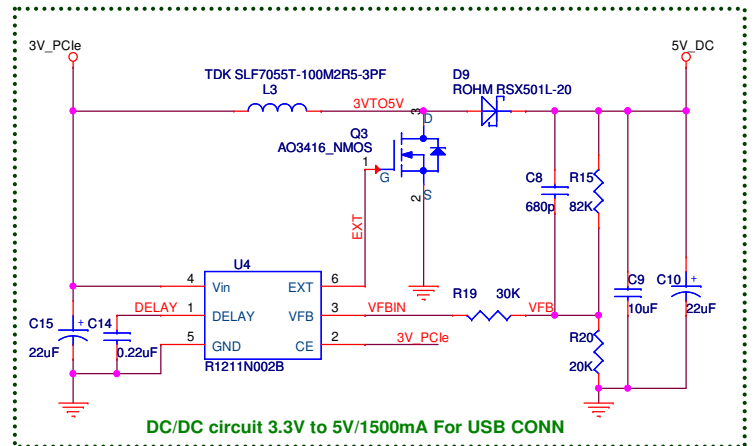
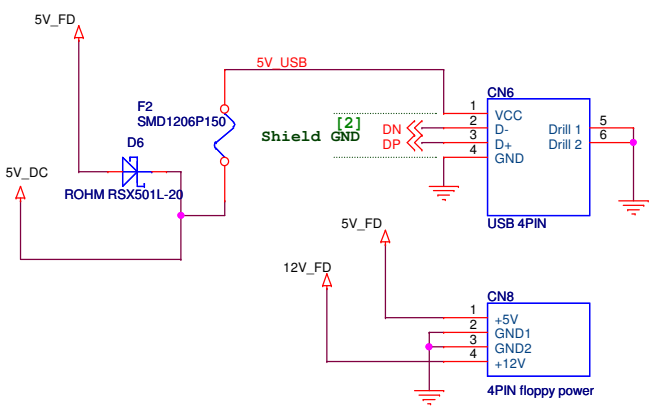
Date	Version	Description
2009 Oct 07	1.0	First Release
2010 Mar 07	2.0	Support x4 PCIe connector
2010 Aug 01	2.1	Support PERST# dealy timing, Add 3.3V, 5V, 12V, PERST# LED
2010 Aug 25	2.2	Add 3V,5V, 12V POWER input conn, Add 12V_DC fuse, 5V_USB fuse
2010 Sep 06	2.3	Add JP4 jump for FD_12V bypass to PCIe conn
2010 Sep 16	2.4	Add D13 Diode



www.bplus.com.tw			
Title	PCI Express 16x connector to Excard		Design by: Gerry Chen
Size B	Document Number	Bplus Technology Co., Ltd.	Rev 2.2
Date:	Friday, October 29, 2010	Sheet	1 of 2



AC/DC in +15~20V/3A



Title		PCI Express 16x connector to Excard		Design by Gerry Chen
Size	Document Number	Bplus Technology Co., Ltd.		Rev
B	PCI_E_16X to EXCARD			2.4
Date:	Friday, October 29, 2010	Sheet	2	of 2