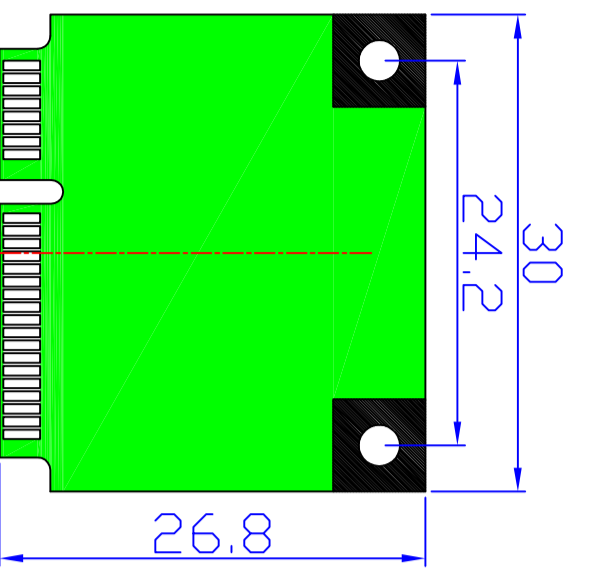
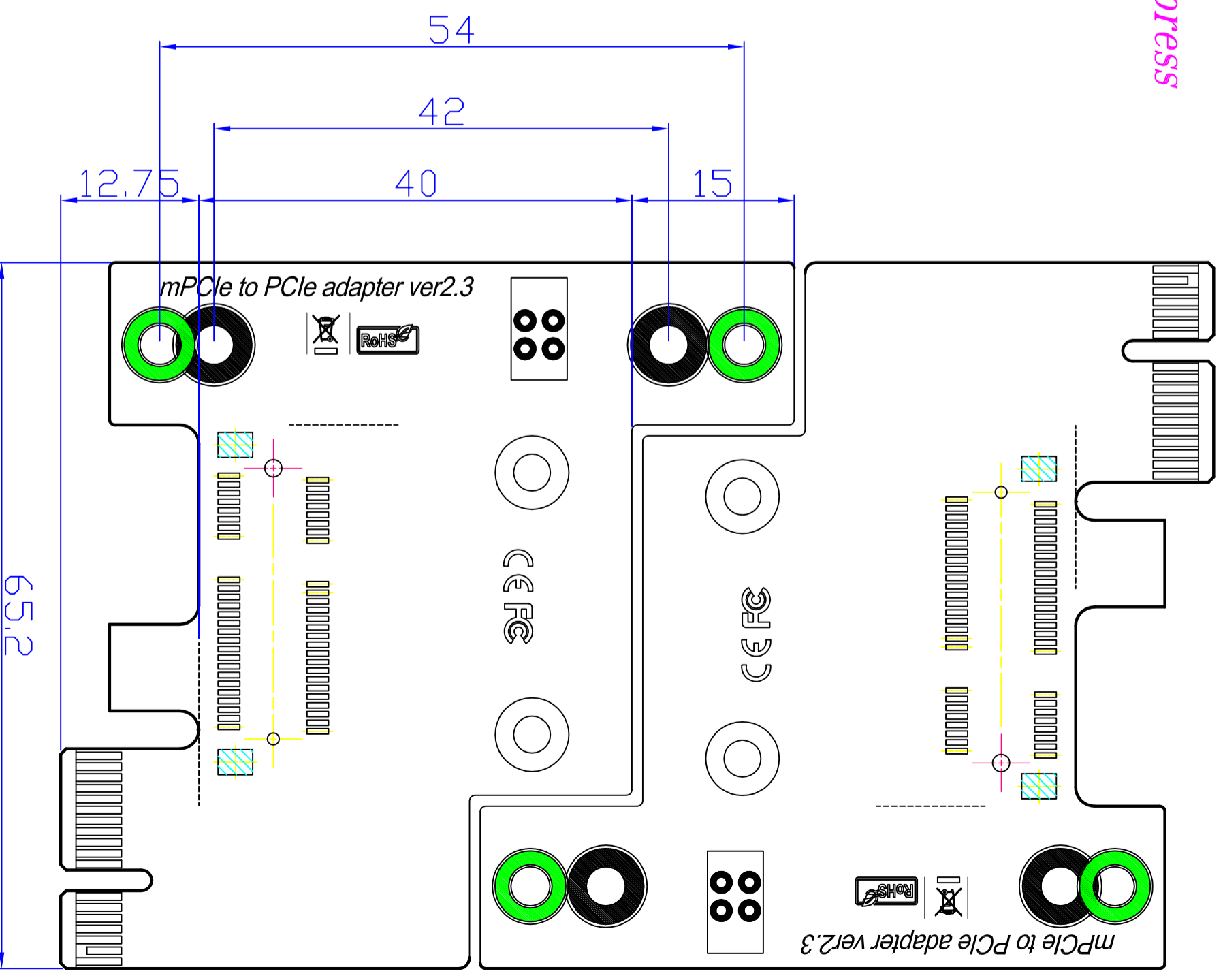
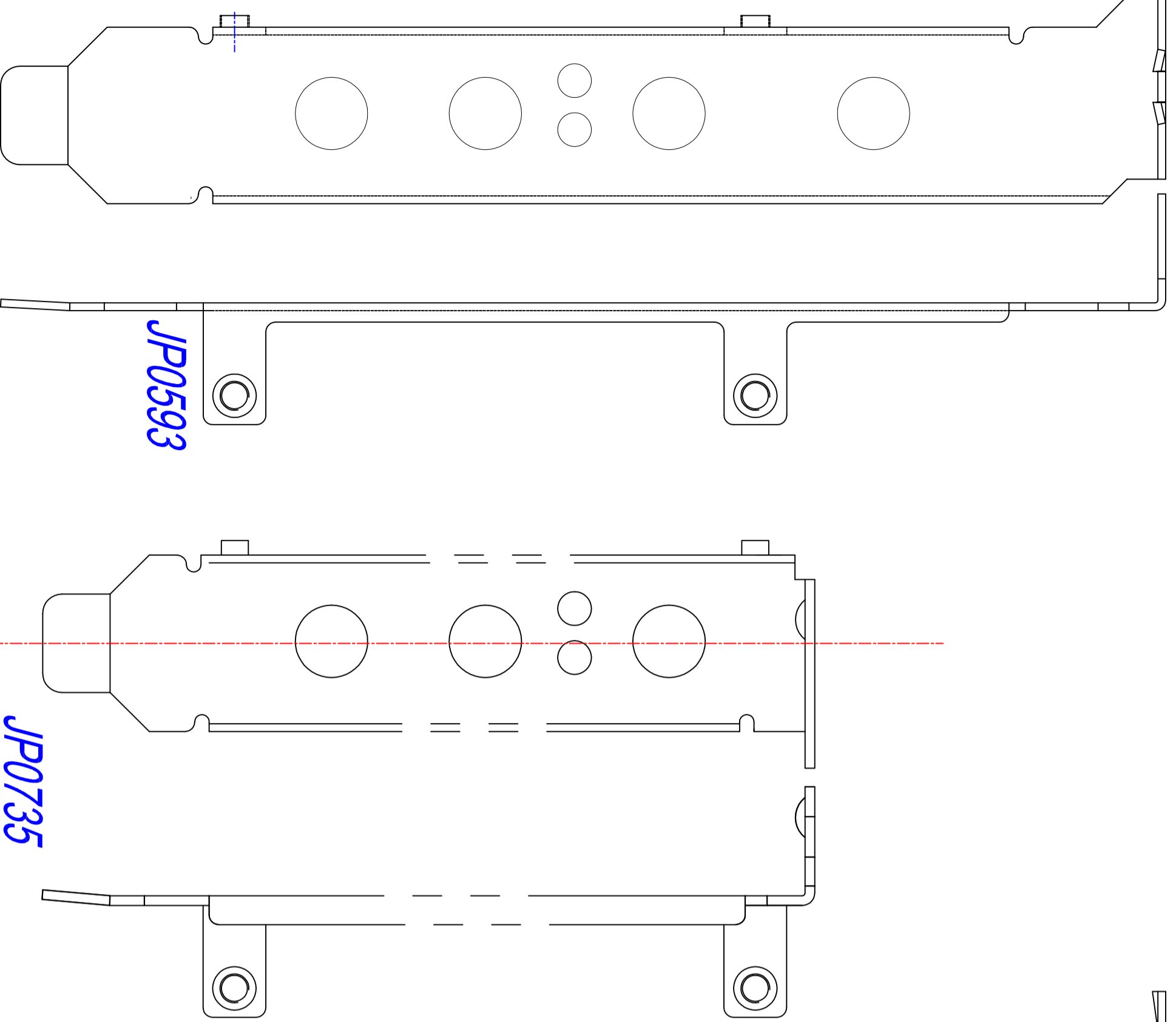


PCIe card / Mini-card adapter
PCI Express Mini Card Electromechanical Specification Revision 1.2
PCI Express Card Electromechanical Specification 1.1

Standard Height PCI Express Add-in Card

Low Profile PCI Express Add-in Card



Half-Mini Card dimension

APPROVED:	- TOLERANCES -		UNIT:	TITLE :		SHEET
ENGINEER:	General	Angles	mm	Mini Card to PCI-E Adapter		1/1
CHECKED:	30~ ±0.25	0° ±3°	SCALE:	DRAWING NUMBER:	Date	SIZE
DRAWN:	10~30 ±0.20	0.0° ±2°	1:1	G-MP2H-PCBL	2011/JULY/27th	A4
	5~10 ±0.15					REV.
	0~5 ±0.10					A/0

Bplus Bplus Technology Co., Ltd.