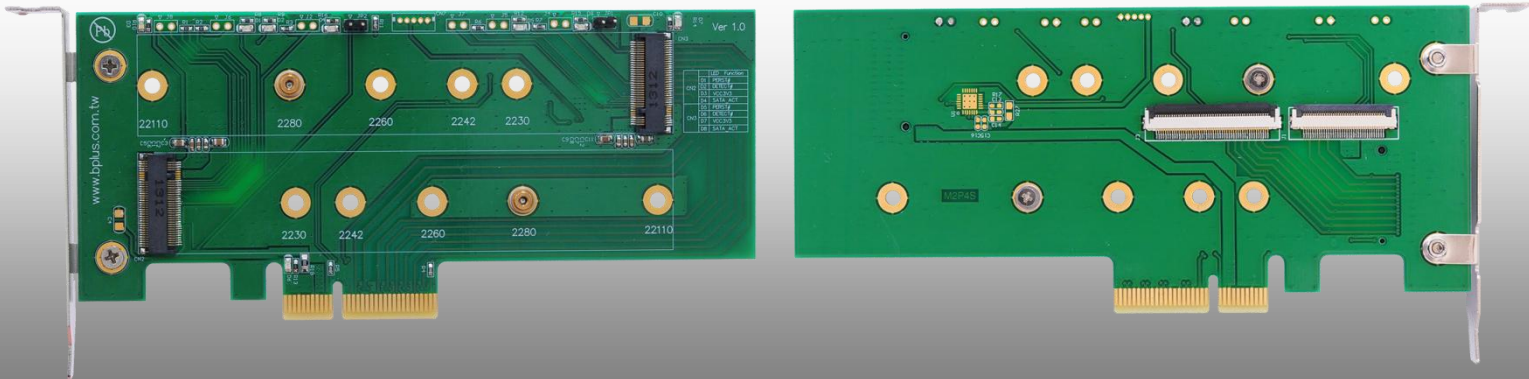


M2P4S

M.2 (NGFF) PCIe base SSD to PCIe X4 Adapter

Product > M.2 interface > M2P4S



First Impression

M.2 stands for Next Generation Form Factor which is invented for PCI-SIG by Intel and it is developed for flat and high-efficiency equipment such as Ultrabook™ or Tablet PCs. It is a natural transition from the Mini Card and Half Mini Card to a smaller form factor in both size and volume which supports multiple function add-in cards/modules including: Wi-Fi, Bluetooth, global navigation satellite systems, near field communication, Hybrid digital radio, wireless gigabit alliance (WiGig), wireless wide area network and solid-state storage devices. Also adds functionality to USB 3.0, display Port, SDIO and SSD-PCIe

M2P4S adapter enables PCIe base M.2(NGFF) SSD as a HDD Card for desktop PC.

M2P4S design two slot for M.2(NGFF) SSD:

One slot use for PCIe x4 slot for desktop PC directly.

Another slot can though FFC (Flat Flexible Cable) cable for flexible use(with KZ-B23x4).

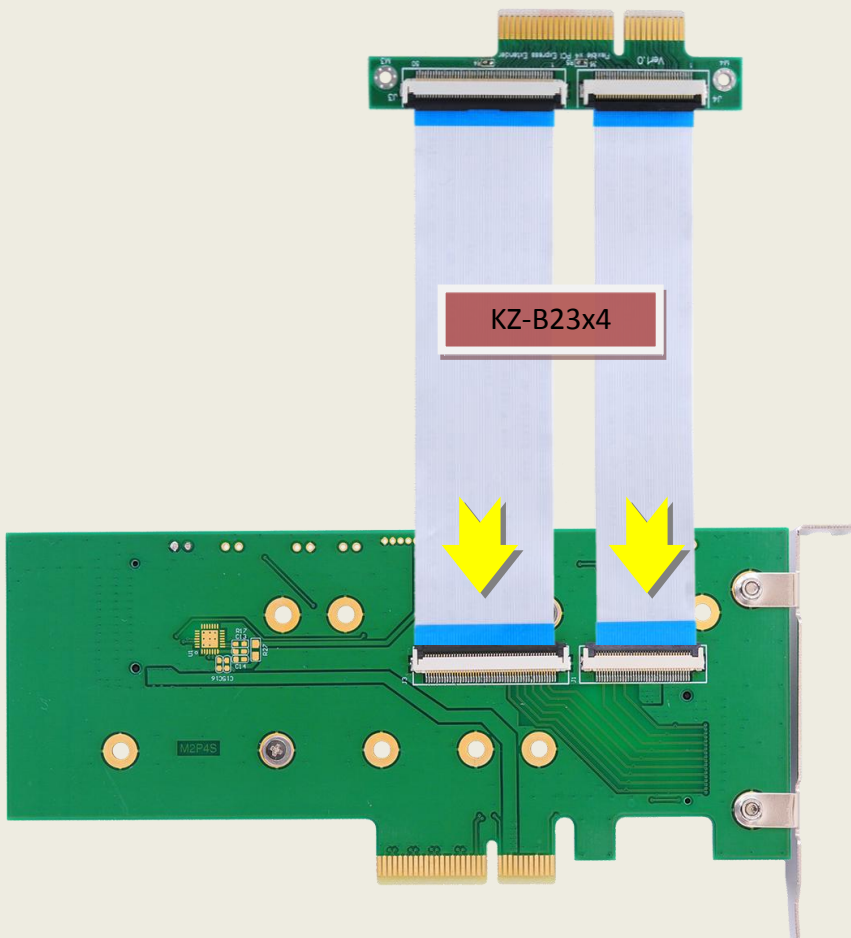
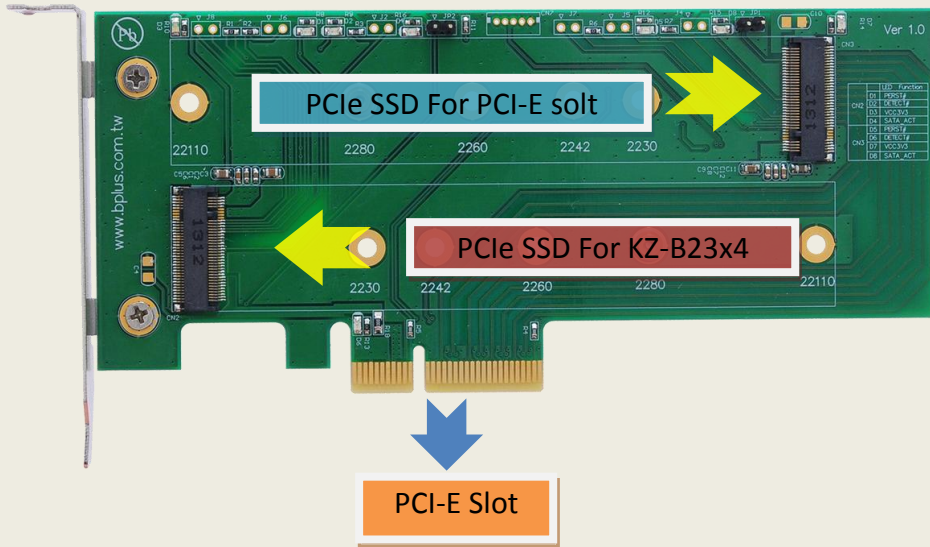
The module can support system boot.

Function

- ◆ Allows user to use standard PCIE base M.2 SSD to PCIe x4 in the Desktop or Laptop.
- ◆ Design the FFC (Flat Flexible Cable) cable for flexible use.
- ◆ Transparent to the operating system and does not require any software drivers.

Specification

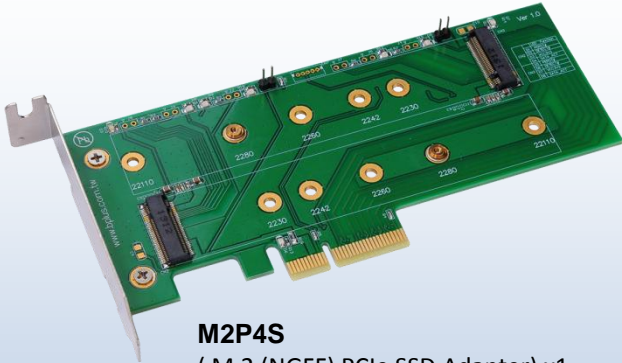
- ◆ M.2 SSD to PCIe X4 adapter.
- ◆ M.2 Specification Revision 0.9
- ◆ Serial ATA Spec. Reversion 3.2
- ◆ Support 2230/2242/2260/2280 /22110 type M.2 Card dimension.
- ◆ Support M.2 Socket 3 PCI-e-based SSD Module.
- ◆ Support M.2 Key M Card Type.



System Requirements:

- ◆ System supporting PCI-E x4 slot

M2P4S Package Contents



M2P4S
(M.2 (NGFF) PCIe SSD Adapter) x1



JP0155
(Standard Height PCI Express bracket) x1



Flat-Head Screw x2

OPTION: KZ-B23x4 Package

