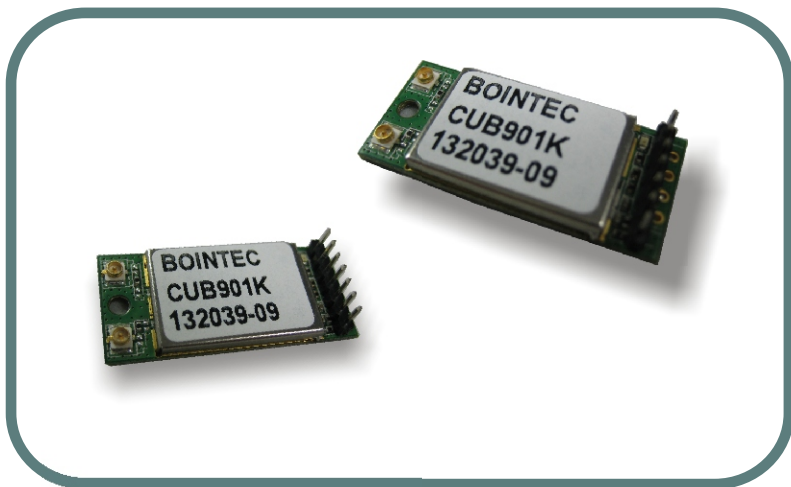


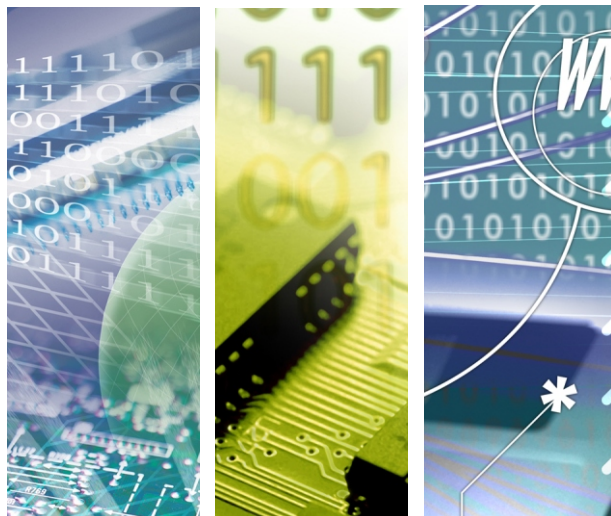


CUB901K

IEEE 802.11a/b/g/n Wifi-USB industrial module



Ultra 2.4GHz bgn industrial module



CUB901K

Introduction of Products

Bointec CUB901K is a WLAN module supporting IEEE 802.11a/b/g/n standards with 7-pin connector using by USB2.0 interface. This is a small form factor and low cost compact WLAN module designed for the wireless connectivity. This module operates in 2.4GHz and 5GHz dual band frequency , it applies a highly integrated MAC/BBP and RF/PA/LNA single chip RT5572 with 300Mbps PHY rate supporting. It fully complies with IEEE802.11n draft 3.0 and IEEE802.11a/b/g feature.

Product Highlight

- * 20MHz/40MHz bandwidth, support 2T2R mode in 2.4GHz and 5GHz .
- * 802.11a: 6, 9, 12, 24, 36, 48, 54Mbps; 802.11b: 1, 2, 5.5, 11Mbps; 802.11g: 6, 9, 12, 24, 36, 48,54Mbps ; 802.11n: Support PHY rate up to 300Mbps.802.11n: Support PHY rate up to 300Mbps.
- * Support Soft-AP; QoS-WMM, WMM-PS; WiFi Direct
- * WPS pin, LED indicates WiFi link & activity;
- * Multiple BSSID support; Power management.
- * Support Wi-Fi Direct native hardware layer
- * RoHS compliant



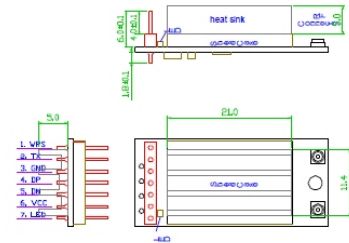
Specification

Main Chipset	Ralink RT5572N
Operation Frequency	2412~2483.5MHz, 4.915~5.825GHz (Different country adopts different frequency)
Protocols	802.11b: CCK, QPSK, BPSK, 802.11a/g/n: OFDM
Antennas	Two outputs to two dual band external antennas
Security	WEP 64/128, WPA/WPA2/WAPI, TKIP/AES; WPS/WPS2: PIN, PBC
Typical Transmit Power (Antenna feed point)	802.11b (CCK) 11Mbps: 17+/-1dBm
	802.11g (OFDM) 54Mbps: 15+/-1dBm
	802.11a (OFDM) 54Mbps: 11+/-1.5dBm
	802.11n (HT20@MCS7), 13+/-1dBm; (HT40@MCS7), 12+/-1dBm
Receive Sensitivity (Antenna feed point)	802.11b: -88+/-1dBm; 802.11g: -73+/-1dBm
	802.11n (HT20), -71+/-1dBm; 802.11n (HT40), -68+/-1dBm
	802.11a: -70+/-1dBm
Operating Voltage/current	5.0VDC \pm 5% ; <350mA @802.11n,HT40 ; or 3.3VDC \pm 5% <500mA, @802.11n,HT40 5.0VDC \pm 5% ; <450mA @802.11a,HT40 ; or 3.3VDC \pm 5% <630mA, @802.11a,HT40
Host interface	USB 2.0
Interface	7-pin or 4-pin, 2.0mm , or 4-pin 2.54 mm pitch pin header
Dimensions/Weight	33x15mm / 4.6g

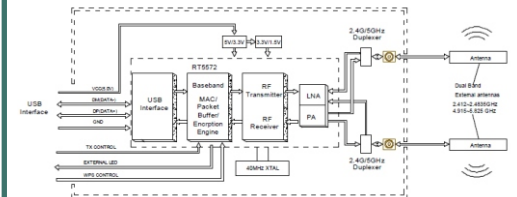
Product quick glance



ME Drawing/placement



Block diagram



We are Your Partner more than Business



BOINTEC TAIWAN CO LTD
1F, #3, A20, L790, SEC. 5, CHUNGHSIAO E. RD., TAIPEI 110, TAIWAN
TEL: +886-2-2759-0081 FAX: +886-2-2759-1659
WWW.BOINTEC.COM

(C)BOINTEC. All rights reserved. Bointec & the Bointec logo are the trademarks of Bointec, which may be registered in some jurisdictions. All other brands and product names are registered trademarks of their respective holders. Information supplied by Bointec is believed to be accurate and reliable. Bointec assumes no responsibility for any errors in this brochure. Bointec reserves the right, without notice, to make changed in product design or specifications.

Bointec Authorized Distributer