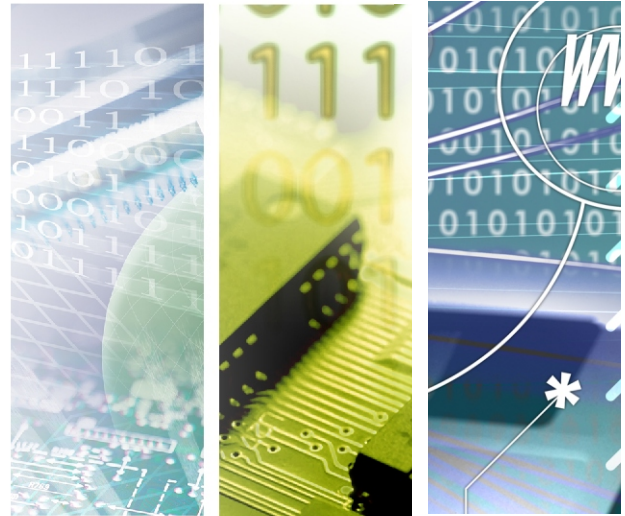
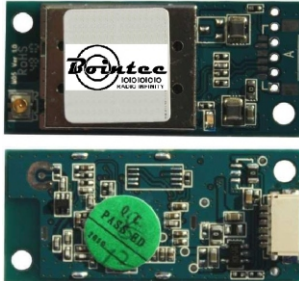




CUB601K

IEEE 802.11b/g/n Wi-Fi-USB industrial module



CUB601K

The cost effective industrial wireless LAN solution

Introduction of Products

BOINTEC CUB601-K is a WLAN module supporting IEEE 802.11 b/g/n standards with 6-pin connector supporting USB 2.0 interface. This is a low cost compact WLAN module designed in products with embedded system for the wireless connectivity. This Module is designed to operate in 2.4GHz ISM frequency band, it applies a highly integrated MAC/BBP and RF single chip RT3070 with 150Mbps PHY rate supporting. It fully complies with IEEE802.11n draft 3.0 and IEEE802.11b/g feature.

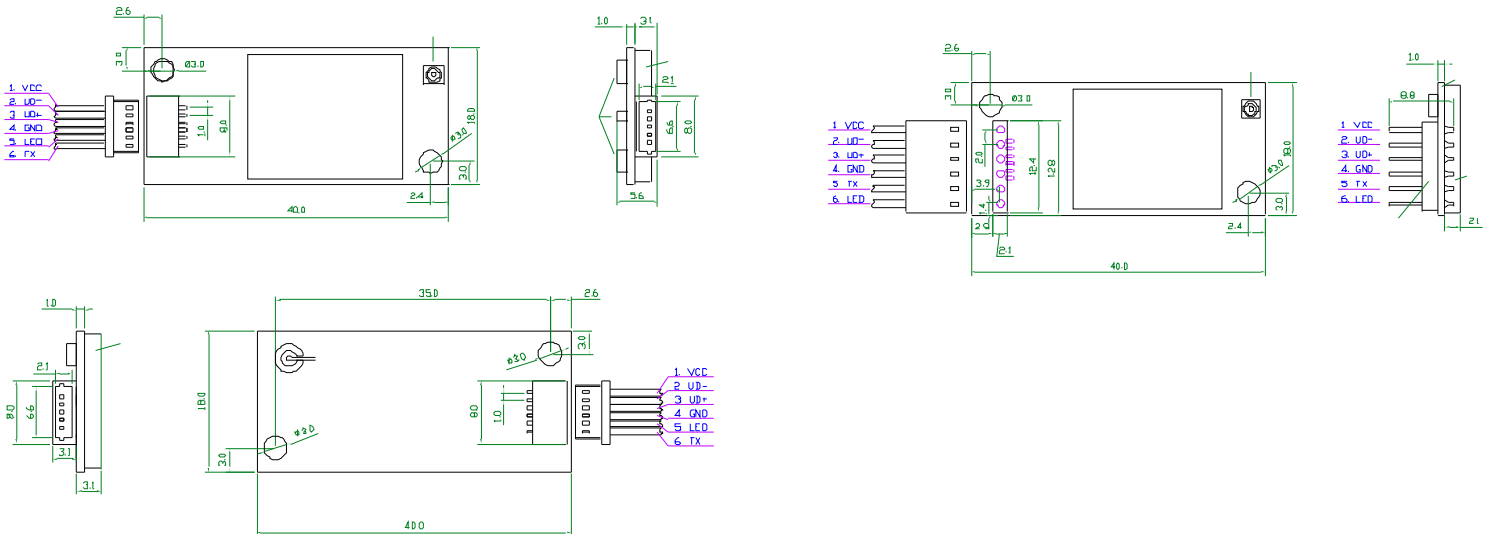
Bointec CUB601-K implements half-duplex OFDM, CCK and DSSS base-band processing supporting IEEE 802.11b/g/n data rates. The MAC supports the IEEE 802.11 wireless MAC protocol as well as 802.11i security, receive and transmit filtering, error recovery, and quality of service (QoS). CUB601-K also supports software based Wi-Fi Protected Setup (WPS). Simply enable the WPS feature from the WIFI software and your device will automatically setup the WIFI security with a compatible WPS wireless router. Setting up a secure wireless network has never been so easy.

Product Highlight

- 1T1R Mode with 150Mbps PHY Rate for Both Transmit and Receiving.
- Legacy and High Throughput Modes
- 20MHz/40MHz Bandwidth
- Reverse Direction Grant Data Flow and Frame Aggregation
- WEP 64/128, WPA, WPA2, TKIP, AES
- QoS-WMM, WMM-PS
- WPS, PIN, PBC
- Multiple BSSID Support
- USB 2.0 bus, miniPCI express mechanical interface
- International Regulation - 802.11d + h
- Diversity, 2 IPEX antenna
- Low Power with Advanced Power Management
- Operating Systems - Windows XP 32/64, 2000, Vista 32/64, Linux, Macintosh

■ Specification

| Physical | |
|------------------------|---|
| Dimensions | 40.0mm x 18.0mm x 5.6mm |
| Package | Module Size, with mounting hole |
| Temperature | operation, -20~+70? Store, -30~+85? . |
| Chipset Solution | |
| Chipset | Ralink RT3070 Single Chip |
| Host Interface | USB 1.1/2.0 |
| Standards | Complies with IEEE 802.11b/g and compatible to IEEE 802.11n draft 2.0 (150 Mbps Wireless LAN) |
| Radio | |
| Frequency Bands | 2.4000~2.4835GHz |
| RF Transmit Power | 802.11b: 16dBm, ± 1.5 802.11g: 14dBm, ± 1.5 802.11gn, HT20: 13dBm, ± 1.5 @ 72Mbps 802.11g HT40: 11dBm, ± 1.5 @ 150Mbps |
| RF Receive Sensitivity | 802.11b: -76dBm, ± 1.5 @ 11Mbps 802.11g: -67dBm, ± 1.5 @ 54Mbps 802.11gn, HT20: -64dBm, ± 1.5 @ 72Mbps 802.11g HT40: -61dBm, ± 1.5 @ 150Mbps |
| Channels | 1-11 channels in base mode (US, Canada) 1-13 channels (ETSI, Japan) 1-13,14 channels (Japan) |
| Baseband | |
| Spread Spectrum | OFDM, DSSS |
| Modulations | DSSS with DBPSK, DQPSK, CCK (11b) OFDM with BPSK, QPSK, 16QAM, 64QAM (11g) OFDM with BPSK, QPSK, 16QAM, 64QAM (11n) |
| Media Access Protocol | CSMA/CA with ACK |
| Data Rate | |
| 11b | 1/2/5.5/11 Mbps |
| 11g | 6/9/12/18/24/36/48/54 Mbps |
| 11n (20MHz) | MCS0-7 (up to 72Mbps) |
| 11n (40MHz) | MCS0-7 (up to 150Mbps) |
| Software | |
| QoS | WMM, WMM-PS |
| Security | WEP (64/128 bit), WPA, WPA2, WPS, 802.1x, TKIP, AES Cisco CCX Support |
| Drivers | Windows XP 32/64, 2000, Vista 32/64, Linux, Macintosh |



BOINTEC TAIWAN CO LTD
1F, #3, A20, L790, SEC. 5, CHUNGHSIAO E. RD., TAIPEI 110, TAIWAN
TEL: +886-2-2759-0081 FAX: +886-2-2759-1659
WWW.BOINTEC.COM

(C)BOINTEC. All rights reserved. Bointec & the Bointec logo are the trademarks of Bointec, which may be registered in some jurisdictions. All other brands and product names are registered trademarks of their respective holders. Information supplied by Bointec is believed to be accurate and reliable. Bointec assumes no responsibility for any errors in this brochure. Bointec reserves the right, without notice, to make changed in product design or specifications. www.bointec.com

BOINTEC_CUB601K_bgn_USB_module_v0.2